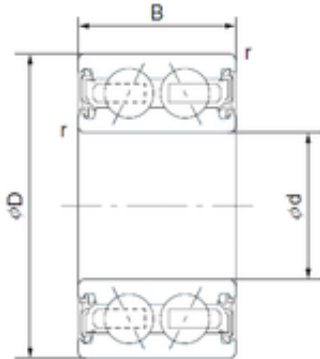




Stainless steel bearing equipment Co....



38 mm x 52 mm x 23 mm CYSD 46/38-2AC2RS
angular contact ball bearings

Bearing No. 46/38-2AC2RS

Size	38x52x23 mm
Bore Diameter	38 mm
Outer Diameter	52 mm
Width	23 mm
d	38 mm
D	52 mm
B	23 mm
C	23 mm
Basic dynamic load rating (C)	11 kN

46/38-2AC2RS Bearing 2D drawings and 3D CAD models